

TENDER BULLETIN

NO. 03 OF 2025/2026 FY
REF: 10/3/6/5

17 APRIL 2025



LIMPOPO

PROVINCIAL GOVERNMENT
REPUBLIC OF SOUTH AFRICA

This document is also available on the following website:
www.limtreasury.gov.za

The heartland of Southern Africa – Development is about people

Provincial Supply Chain Management Office

TABLE OF CONTENTS

	Page No.
1. REPORTING FRAUDULENT AND CORRUPT ACTIVITIES	03
2. INSTRUCTIONS.....	04
3. BID INVITATIONS	05
4. AWARDED BIDS.....	05-10
5. CSD RFQ AWARENESS SESSIONS	11-12
8. TENDER ALERT	13
9. GENERAL NOTICE	14
ANNEXURE 1: ADDRESS LIST AND CONTACT DETAILS: PROVINCIAL DEPARTMENTS.....	14 - 16
ANNEXURE 2: ADDRESS LIST AND CONTACT DETAILS: PUBLIC ENTITIES	17
ANNEXURE 3: ADDRESS LIST AND CONTACT DETAILS: PROVINCIAL TREASURY SCM CLIENT SUPPORT CENTRES	18
8. SELF REGISTRATION PROCESS.....	19

REPORT FRAUDULENT & AND CORRUPT ACTIVITIES IN THE GOVERNMENT PROCUREMENT SYSTEM

National Anti-Corruption @ 0800 701 701

Security and Investigating Services – Limpopo Provincial Treasury @ 015 298 7196

ALL COMPLAINTS/CONCERNS RELATED TO SCM NON-COMPLIANCE MUST BE REPORTED TO:

LIMPOPO PROVINCIAL TREASURY

PRIVATE BAG X 9486

POLOKWANE

0700

PROVINCIAL TREASURY, FINANCE HOUSE, 56 – 58 PAUL KRUGER STREET, POLOKWANE

1. INSTRUCTIONS

1. Bidders are advised to read the entire tender bulletin.
2. Tenders for procurement of supplies, services and disposals are categorized as follows:

SUPPLIES

- Accommodation, leasing of
- Audio visual equipment
- Building material
- Chemicals: Agricultural/Forestry/
- Laboratory/Water Care
- Clothing/Textiles
- Computer equipment
- Computer software
- Electrical equipment
- Electronic equipment
- Furniture
- General
- Medical
- Office equipment: Labour-saving devices
- Perishable provisions
- Stationary/printing
- Steel
- Timber
- Vehicle (all types)
- Workshop equipment

SERVICES

- Building
- Civil
- Electrical
- Functional (including cleaning-, and security services)
- General
- Maintenance of electrical, mechanical
- Equipment and plumbing
- Mechanical
- Professional
- Repair and maintenance of vehicles
- Transport

DISPOSALS

- Clothing and textiles
- Furniture
- General
- Scrap metal
- Vehicles

3. Bid documents are generally available in English only.
4. The address where a bid document is available from and where it must be submitted to may differ.
5. The addresses at which bid documents may be accessed and posted appear in Annexure 1 and 2.
6. The address list of various Supply Chain Management Advice Centers appears in Annexure 3;

3. BID INVITATIONS

BID NO.	DESCRIPTION OF SERVICE OR SUPPLIES	CONTACT DETAILS	DUE AT 11H00	BID DOCUMENTS OBTAINABLE FROM	POST OR DELIVER BIDS TO (See Annexure 1 & 2)
TMT-LDOE-2022/23-BATCH06-LPCL3D/1	<p>Magaingwana Secondary- construct 57 seat, 14 urinals waterborne, renovation of 21 seats enviroloo, demolition of 18 seats pit toilets, renovate borehole, 1.2m wide walkway, fencing around elevated tanks, 950m steel palisade, water supplies, elevated water tanks, septic tank, steel stand for existing water tanks</p> <p>CIDB GRADING: 4GB or Higher</p> <p>COMPULSORY BRIEFING Date : Friday, 02 May 2025 Time : 10h00 am Venue: Magaingwana Primary School</p> <p>Mvula Trust</p>	<p>BIDDING PROCESS Ms Lindiwe Duma @ Tel: 015 291 2405</p> <p>TECHNICAL ASPECTS Ms Vongani Cha@uke @ Tel: 015 291 2405</p>	Friday, 16 May 2025@ 12:00pm	Available for free, on e-portal, Available for free on e-portal, CIDB and www.etenders.gov.za,	120

4. AWARDED BIDS

4.1. PUBLIC WORKS, ROADS AND INFRASTRUCTURE

AWARDED BIDS 2024/2025					
LIMPOPO DEPARTMENT OF PUBLIC WORKS, ROADS AND INFRASTRUCTURE					
Bid Number	Awarded Bidder	Project Description	Amount	Points	Date Awarded
LDPWRI-CS/20365/01	Takana Limpopo Security Services	Rendering of Security Services for Head Office and District Offices	R16 117 427,10	74.22	31/03/2025
LDPWRI-CS/20365/02	Tlou Noko Security Services	Rendering of Security Services for Head Office and District Offices	R16 627 152,80	97.00	31/03/2025
LDPWRI-CS/20365/03	Nomvula protection JV Bravospan	Rendering of Security Services for Head Office and District Offices	R16 387 507,08	82.35	31/03/2025
LDPWRI-CS/20365/04	Resolve Trading 143cc	Rendering of Security Services for Head Office and District Offices	R19 185 174,00	92.66	31/03/2025
LDPWRI-CS/20365/05	Cocotiva Security	Rendering of Security Services for Head Office and District Offices	R15 130 500,60	79.91	31/03/2025
LDPWRI-CS/20365/06	Malope A Phaahla Security Services	Rendering of Security Services for Head Office and District Offices	R14 901 930,00	97.00	31/03/2025
LDPWRI-CS/20365/07	Artic Fox Security	Rendering of Security Services for Head Office and District Offices	R14 909 622,12	98.00	31/03/2025
LDPWRI-CS/20365/08	Mathomomayo Investment Holdings	Rendering of Security Services for Head Office and District Offices	R19 002 600,00	72.10	31/03/2025
LDPWRI-CS/20365/09	Master in Force Security Services	Rendering of Security Services for Head Office and District Offices	R17 270 010,00	97.00	31/03/2025
LDPWRI-CS/20365/10	Brown Dogs Security Unity CC	Rendering of Security Services for Head Office and District Offices	R16 394 400,00	94.00	31/03/2025
LDPWRI-CS/20365/11	Sip Vic Security Services (PTY) LTD	Rendering of Security Services for Head Office and District Offices	R18 060 336,00	98.00	31/03/2025

LIMPOPO PROVINCIAL TENDER BULLETIN NO 03 of 2025/26 FY 17 APRIL 2025

LDPWRI-CS/20365/12	Mazaxa Construction and Projects	Rendering of Security Services for Head Office and District Offices	R15 260 454,00	97.00	31/03/2025
LDPWRI-CS/20365/13	Sauve Solutions	Rendering of Security Services for Head Office and District Offices	R15 847 920,00	99.00	31/03/2025
LDPWRI-CS/20365/14	Afrirox Investment	Rendering of Security Services for Head Office and District Offices	R15 723 720,00	98.04	31/03/2025
LDPWRI-CS/20365/15	Tshakhwilo Trading Enterprise	Rendering of Security Services for Head Office and District Offices	R18 083 520,00	96.00	31/03/2025
LDPWRI-CS/20365/16	Tough Security Services	Rendering of Security Services for Head Office and District Offices	R16 146 000,00	98.00	31/03/2025
LDPWRI-CS/20365/17	Sedima Security and Cleaning Services	Rendering of Security Services for Head Office and District Offices	R17 269 481,00	98.40	31/03/2025
LDPWRI-CS/20365/18	Mabotwane Security Services	Rendering of Security Services for Head Office and District Offices	R19 083 537,00	80.50	31/03/2025
LDPWRI-CS/20365/19	KMT SECURITY AND EVENTS MANAGEMENT	Rendering of Security Services for Head Office and District Offices	R15 987 645,00	97.00	31/03/2025
LDPWRI-CS/20365/20	Mahosi Protection Security Services	Rendering of Security Services for Head Office and District Offices	R19 251 000,00	84.15	31/03/2025
LDPWRI-CS/20365/21	Tshisasa Security Services	Rendering of Security Services for Head Office and District Offices	R18 537 264,00	83.55	31/03/2025
LDPWRI-CS/20365/22	Kan Security Solutions	Rendering of Security Services for Head Office and District Offices	R17 222 400,00	97.00	31/03/2025
LDPWRI-CS/20365/23	Molapo Motle Enterprise	Rendering of Security Services for Head Office and District Offices	R15 698 880,00	95.00	31/03/2025
LDPWRI-R/20436	Pioneer Civils	Supply, Delivery and Offloading of Cold Asphalt at Roedtan Cost Centre	R119,00	69.75	31/03/2025
LDPWRI-R/20436	Gae Afrika Investments	Supply, Delivery and Offloading of Cold Asphalt at Dwaalboom Cost Centre	R104,00	96.43	31/03/2025
LDPWRI-R/20436	Mokhutloane Trading Enterprise	Supply, Delivery and Offloading of Cold Asphalt at Tsemanye Cost Centre	R119,00	70.93	31/03/2025
LDPWRI-R/20436	Metah Trading	Supply, Delivery and Offloading of Cold Asphalt at Alma Cost Centre	R102,00	95.39	31/03/2025

LDPWRI-R/20436	Airtech Air-condition (Pty) Ltd	Supply, Delivery and Offloading of Cold Asphalt at Marken Cost Centre	R116,00	77.33	31/03/2025
LDPWRI-R/20436	Rhumba Suppliers	Supply, Delivery and Offloading of Cold Asphalt at Phalaborwa Cost Centre	R118,70	77.87	31/03/2025
LDPWRI-R/20436	Baagi Pele Construction	Supply, Delivery and Offloading of Cold Asphalt at Skeiding Cost Centre	R118,40	66.36	31/03/2025
LDPWRI-R/20436	Mopedithwi Supply (Pty) Ltd	Supply, Delivery and Offloading of Cold Asphalt at Lebowakgomo Cost Centre	R103,50	79.42	31/03/2025
LDPWRI-R/20436	Kobela Construction and Project Management	Supply, Delivery and Offloading of Cold Asphalt at Mogwadi Cost Centre	R85,73	94.00	31/03/2025
LDPWRI-R/20436	Motekoa Development (Pty) Ltd	Supply, Delivery and Offloading of Cold Asphalt at Mathapo Cost Centre	R109,00	76.51	31/03/2025
LDPWRI-R/20436	Machoo Events Management (Pty) Ltd	Supply, Delivery and Offloading of Cold Asphalt at Mutale Cost Centre	R119,00	81.9	31/03/2025
LDPWRI-R/20436	Mlebah Electrical and Projects (Pty) Ltd	Supply, Delivery and Offloading of Cold Asphalt at Musina Cost Centre	R110,00	79.18	31/03/2025
LDPWRI-R/20436	Sunnay Trading 240 cc	Supply, Delivery and Offloading of Cold Asphalt at Thabazimbi Cost Centre	R118,00	80.45	31/03/2025
LDPWRI-R/20436	Enokis Trading and Projects (Pty) Ltd	Supply, Delivery and Offloading of Cold Asphalt at Veeplaats Cost Centre	R117,00	68.50	31/03/2025
LDPWRI-R/20436	MIP Seedlings (Pty) Ltd	Supply, Delivery and Offloading of Cold Asphalt at Hlanganani Cost Centre	R106,13	86.66	31/03/2025
LDPWRI-R/20436	Tlapankwe Consulting	Supply, Delivery and Offloading of Cold Asphalt at Alldays Cost Centre	R101,40	88.17	31/03/2025
LDPWRI-R/20436	Sejwe Sa Matladi Trading Enterprise	Supply, Delivery and Offloading of Cold Asphalt at Nebo Cost Centre	R119,00	74.94	31/03/2025
LDPWRI-R/20436	Arcelor Steel Projects	Supply, Delivery and Offloading of Cold Asphalt at Modimolle Cost Centre	R119,00	76.83	31/03/2025
LDPWRI-R/20436	Moshopane Business Enterprise	Supply, Delivery and Offloading of Cold Asphalt at Lethaba Cost Centre	R113,56	77.50	31/03/2025
LDPWRI-R/20436	Nech Perez Consultants International (Pty) Ltd	Supply, Delivery and Offloading of Cold Asphalt at Bela-Bela Cost Centre	R102,00	92.79	31/03/2025

LDPWRI-R/20436	Vuhurhi Trading (Pty) Ltd	Supply, Delivery and Offloading of Cold Asphalt at Thohoyandou Cost Centre	R115,00	77.06	31/03/2025
LDPWRI-R/20436	Mosiski Transport Services	Supply, Delivery and Offloading of Cold Asphalt at Makhado Cost Centre	R106,54	77.67	31/03/2025
LDPWRI-R/20436	Amo-A-Mas Business Enterprise	Supply, Delivery and Offloading of Cold Asphalt at Giyani Cost Centre	R103,00	86.30	31/03/2025
LDPWRI-R/20436	Goitsihumo Trading	Supply, Delivery and Offloading of Cold Asphalt at Tzaneen Cost Centre	R90,04	98.12	31/03/2025
LDPWRI-R/20436	BJS View (Pty) Ltd	Supply, Delivery and Offloading of Cold Asphalt at Malamulele Cost Centre	R113,85	80.01	31/03/2025
LDPWRI-R/20436	Mothikeni Investments (PTY)LTD	Supply, Delivery and Offloading of Cold Asphalt at Hoeraroep Cost Centre	R103,27	82.53	31/03/2025
LDPWRI-R/20436	Samchar Brothers (Pty) Ltd	Supply, Delivery and Offloading of Cold Asphalt at Mecklernberg Cost Centre	R112,00	75.84	31/03/2025
LDPWRI-R/20436	Makwela Holdings (Pty) Ltd	Supply, Delivery and Offloading of Cold Asphalt at Groblersdal Cost Centre	R109,00	85.01	31/03/2025
LDPWRI-R/20436	MN Engineering Supplies and Projects (Pty) Ltd	Supply, Delivery and Offloading of Cold Asphalt at George Masebe Cost Centre	R103,00	82,77	31/03/2025
LDPWRI-R/20436	Sue's Kitchen (Pty) Ltd	Supply, Delivery and Offloading of Cold Asphalt at Lephalale Cost Centre	R117,30	80,16	31/03/2025
LDPWRI-R/20436	Afri Group Trading and Investments (Pty) Ltd	Supply, Delivery and Offloading of Cold Asphalt at Maruleng Cost Centre	R118,45	79,07	31/03/2025
LDPWRI-R/20436	Sekma Construction and projects	Supply, Delivery and Offloading of Cold Asphalt at Matlala Cost Centre	R109,12	77,8	31/03/2025
LDPWRI-R/20436	Mphengula Trading Enterprise	Supply, Delivery and Offloading of Cold Asphalt at Mokopane Cost Centre	R113,00	73,93	31/03/2025
LDPWRI-R/20436	Dikane Mokebe Enterprise	Supply, Delivery and Offloading of Cold Asphalt at Sandriver Cost Centre	R118,50	68,19	31/03/2025
LDPWRI-R/20436	Muganga Trading (Pty) Ltd	Supply, Delivery and Offloading of Cold Asphalt at Tolwe Cost Centre	R118,00	71,69	31/03/2025

4.2. DEPARTMENT OF AGRICULTURE

BID NO.	DESCRIPTION OF SERVICE	DATE OF AWARD	SERVICE PROVIDER	AWARD AMOUNT	POINTS SCORED
ACDP 24/06	Construction of upgrading and betterment works at Tom Mitchelle Dam on the farm Welgevonden 36 in the Vhembe District of the Limpopo Province.	07/04/2025	Machaba Tau Construction.	R2 701 204.29	94.00



LIMPOPO
PROVINCIAL GOVERNMENT
REPUBLIC OF SOUTH AFRICA

PROVINCIAL TREASURY

Dear valued Supplier

We are pleased to inform you that Limpopo Provincial Government departments will begin using the Central Supplier Database (CSD) to manage the distribution of Request for Quotations (RFQ) for their procurement below R1 000 000 effective from 1st April 2025 for all their Head Offices procurement and for the Department of Public Works and Department of Transport District Offices. The current manual system will be phased out over time; it will run concurrently with the CSD RFQ Functionality System, especially for district offices that have procurement delegations other than those mentioned above.

With this enhancement, RFQ invitations will be sent directly through the CSD RFQ Functionality System. We ask that you submit all quotations and required documentation in PDF format via the CSD RFQ Functionality System.

For guidance on submitting quotations, please refer to the training material in the Supplier's Area under "Informational videos" on the CPO website, as well as the attached brochure. Provincial Treasury is currently holding Supplier Awareness sessions from 14-25/03/2025 across the five districts (Check the Provincial Tender Bulletin for details for your district) and will continue with the Virtual Sessions in the month of April 2025, program will be published in the Provincial Tender Bulletin as well as in the E- Tender Portal.

To maximise your access to RFQ opportunities, please ensure that your CSD profile reflects:

- a) all goods and services your organisation can provide to the Limpopo Provincial Administration
- b) Up-to-date contact details
- c) A current proof of address
- d) If Persons with Disability owns the business, there is a new requirement on CSD to upload your medical certificate.
- e) If the business is owned by a Military Veteran, there is a new requirement on CSD to put your Force Number and upload the letter as a means of verification.
- f) Beneficial Ownership verification with CIPC.

Thank you for your attention and your valued partnership with Limpopo Provincial Administration.

Regards

Ms. THINDISA MD

DEPUTY DIRECTOR GENERAL : ALSCM

14/03/2025

DATE

36000 TOWN, 40 HANS VAN BROEKHOF STR, POLKOWANE, 0700, PRIVATE BAG 30486, POLKOWANE, 0700
TEL: (013) 288 7000, FAX: (013) 288 7010 WEBSITE: <http://www.limpopo.gov.za>

The heartland of southern Africa - development is about people!



LIMPOPO
PROVINCIAL GOVERNMENT
REPUBLIC OF SOUTH AFRICA

PROVINCIAL TREASURY

INVITATION

TO: ALL SUPPLIERS

Kindly note that Limpopo Provincial Treasury will be conducting supplier awareness online training on the new method for requesting quotations (RFQ functionality) through Central Supplier Database (CSD).

The training will be conducted online scheduled as follows:

Date	Webinar link	Time
22 April 2025	https://tinyurl.com/treasurycsd	09H30
24 April 2025	https://tinyurl.com/treasurycsd24	09H30
29 April 2025	https://tinyurl.com/treasurycsd29	09H30
30 April 2025	https://tinyurl.com/treasurycsd30	09H30
06 May 2025	https://tinyurl.com/treasurycd06	09H30
08 May 2025	https://tinyurl.com/treasurycsd08 :	09H30

Enquiries can be directed to SCM Client Support Services

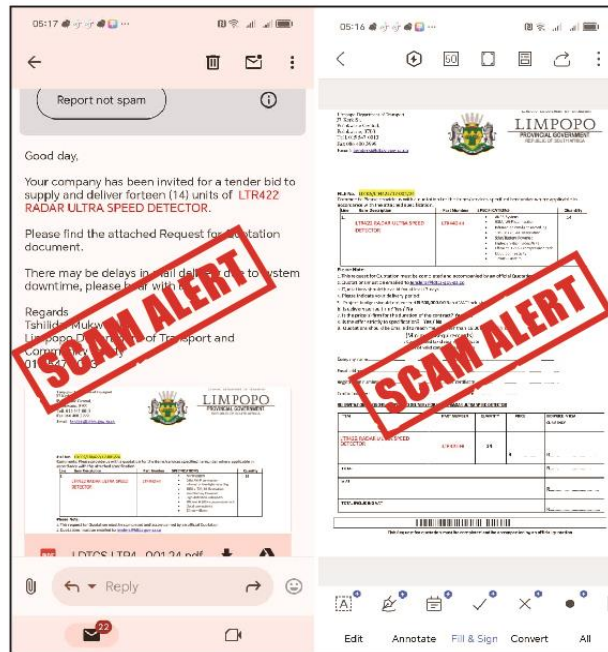
Ms Rasilingwani M	Capricorn	015 291 8424
Ms Mushavi A	Vhembe	015 962 1752
Mr Molele M.N	Mopani	015 812 0149
Ms Moloi R.B	Waterberg	060 992 6210
Mr Nemukula L	Sekhukhune	013 265 1344



LIMPOPO
PROVINCIAL GOVERNMENT
REPUBLIC OF SOUTH AFRICA

DEPARTMENT OF
TRANSPORT AND COMMUNITY SAFETY

TENDER SCAM ALERT!



BEWARE OF A FRAUDULENT REQUEST FOR QUOTATION OR BID NOTIFICATION CIRCULATING ON SOCIAL MEDIA AND EMAILS, CLAIMING TO BE FROM THE LIMPOPO PROVINCIAL GOVERNMENT!

A fraudulent request for quotation or bid notification seeks suppliers for 14 units of ITR422 RADAR ULTRA SPEED DETECTOR. **Please note that this bid notification is FAKE.**

The Limpopo Department of Transport and Community Safety did not issue this document. Legitimate bids are advertised on e-tender, Limpopo Tender Bulletin and the official website: www.ldtcs.gov.za

Engage with verified government officials and websites.

Report any suspicious activity through

WhatsApp: 072 621 9711 or 082 804 4740

Email: fraud@dtcs.limpopo.gov.za



<http://www.ldot.gov.za>



@TransportLimCom



DepartmentofTransport&CommunitySafety

The heartland of southern Africa - development is about people

8. GENERAL NOTICE

ANNEXURE 1: ADDRESS LIST AND CONTACT DETAILS: LIMPOPO PROVINCIAL DEPARTMENTS

UNIQUE REF. NO.	BID DOCUMENT REFERENCE	CONTACT DETAILS	DOCUMENTS ACCESSED AT:	DOCUMENTS DEPOSITED AT
100	DSDP	Tel: 015 293 6000 Fax: 015 293 6211 Website: www.limpopo.gov.za	E-tender portal and departmental /entity's website	Deposited in the box located at the Department of Social Development, 21 Biccarr Street Polokwane
101	LPT	Tel: 015 298 7000 Fax: 015 295 7010 Website: www.limpopo.gov.za	E-tender portal and departmental /entity's website	Deposited in the bid box located outside a guard house at Ismini Towers, 46 Hans Van Rensburg Street, Polokwane
101A	TC/LP	Tel: 015 291 8400 Fax: 015 295 3310 Website: www.limpopo.gov.za	E-tender portal and departmental /entity's website	Deposited in the bid box located at the main entrance, Finance House Building, 56-58 Paul Kruger Street, Polokwane
102	PRDP	Tel: 015 287 6000 Fax: 015 295 3840 Website: www.limpopo.gov.za	E-tender portal and departmental /entity's website	Deposited in the bid box located at Mowaneng Building, 40 Hans van Rensburg Street, Polokwane
103	HEDP	Tel: 015 293 6000 Fax: 015 293 6211 Website: www.limpopo.gov.za	E-tender portal and departmental /entity's website	Deposited in the box located at Department of Health and Social Development, 18 College Street, Polokwane
104	LPEDT	Tel: 015 290 7600/1 Fax: 015 297 4494 Website: www.limpopo.gov.za	E-tender portal and departmental /entity's website	Deposited in the bid box located at the main entrance of corner 113 Biccarr Street and Excelsior Street, Polokwane
105	PUDP	Tel: 015 295 1000 Fax: 015 295 1163 Website: www.limpopo.gov.za	E-tender portal and departmental /entity's website	Deposited in the bid box located at 1 st Floor, Paul Kruger Wing, 40 Paul Kruger Street, Polokwane
106	COGHSTA	Tel: 015 294 2000 Fax: 015 295 4190 Website: www.limpopo.gov.za	E-tender portal and departmental /entity's website	Deposited in the bid box located at Hensa Towers, Cnr of Rabe and Landdros Mare Streets, Polokwane

107	DSAC	Tel: 015 284 4000 Fax: 015 284 4514 Website: www.limpopo.gov.za	E-tender portal and departmental /entity's website	Deposited in the bid box located at the main entrance of Olympic Towers, Corner 21 Rabe and Biccard Street, Polokwane
108	LEDET	Tel: 015 293 8300 Fax: 015 293 8319 Website: www.limpopo.gov.za	E-tender portal and departmental /entity's website	Deposited in the bid box located at the main entrance of Evridiki Towers, 19 Biccard Street, Polokwane
109	LDPW & WODP	Tel: 015 284 7000 Fax: 015 284 7031 Website: www.limpopo.gov.za	E-tender portal and departmental /entity's website	Deposited in the bid box located at Corner Blaawberg and River Street Ladanna Polokwane 0699 Private Bag X9490 Polokwane 0700
110	ACDP	Tel: 015 294 3000/30/60/90/20 Fax: 015 294 4506 Website: www.limpopo.gov.za	E-tender portal and departmental /entity's website	Deposited in the bid box located at the main entrance of AgriVillage, 69 Biccard Street, Polokwane

ANNEXURE 2: ADDRESS LIST AND CONTACT DETAILS: LIMPOPO PUBLIC ENTITIES

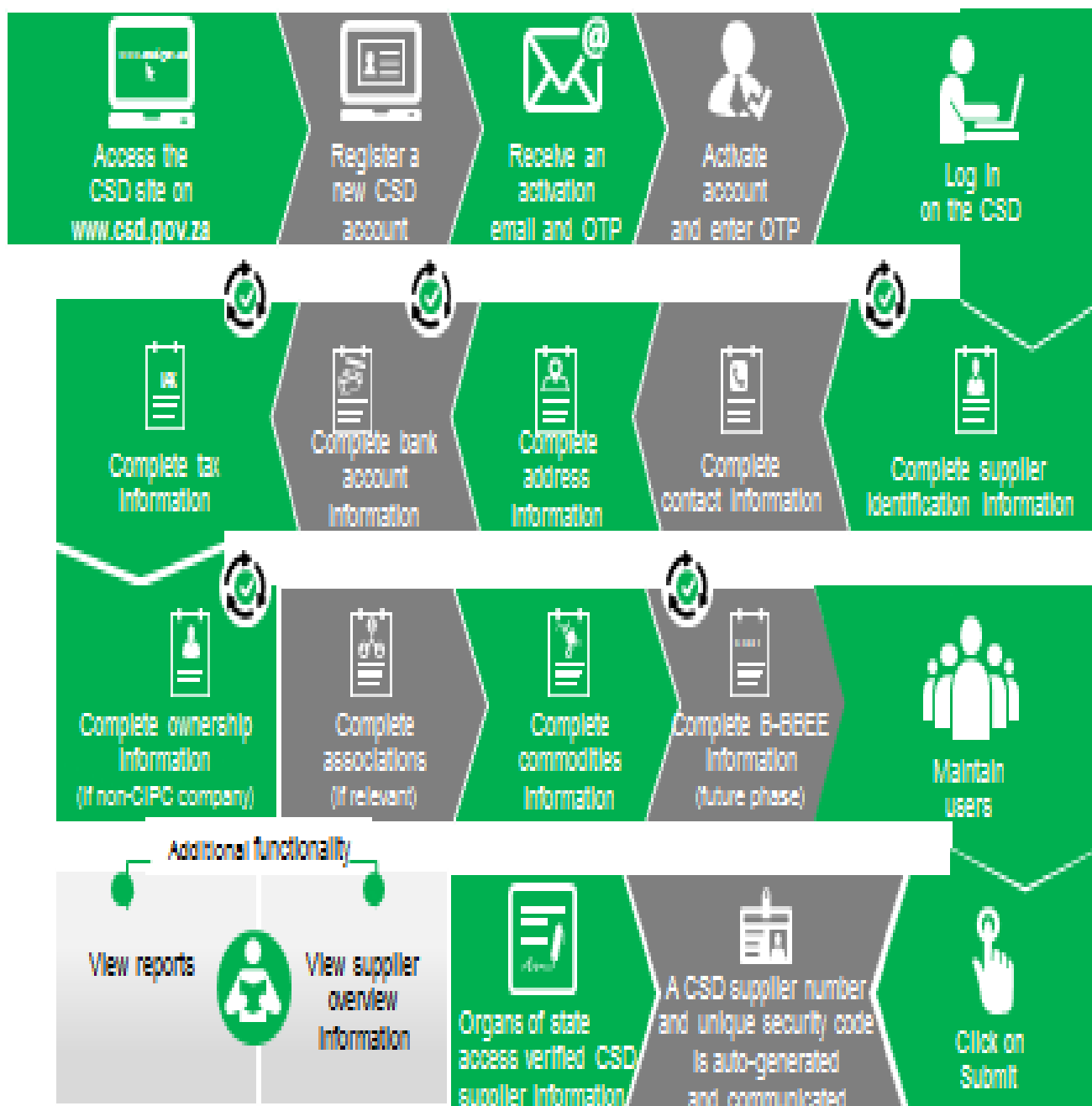
UNIQUE REF. NO.	BID DOCUMENT REFERENCE	CONTACT DETAILS	DOCUMENTS ACCESSED AT:	DOCUMENTS DEPOSITED AT
111	RFB: LIMP	Tel: 015 293 3621 Fax: 015 293 3660 Website: www.golimpopo.com	E-tender portal and departmental /entity's website	The bid box is located at the Main Entrance of the Moolman Building, 27 Market Street, Polokwane
112	LTA	Tel: 015 293 3600 Fax: 015 293 3655 Website: www.golimpopo.com	E-tender portal and departmental /entity's website	The bid box is located in the offices ERF 92/688, Portion 2 Southern Gateway, Ext 4, N1 Main Road, Polokwane 0699
113	LGB	Tel: 015 295 5581 Fax: 015 295 3566 Website: www.lgb.org	E-tender portal and departmental /entity's website	The bid box is located at the main entrance, 8 Hans van Rensburg Street, Polokwane, 0699
114	LEDA	Tel: 015 633 4700 Fax: 015 633 4854 Website: www.leda.co.za	E-tender portal and departmental /entity's website	The bid box is located at the main entrance, Enterprise Development Finance, Main Road Lebowakgomo
115	RAL	Tel: 015 284 4600 Fax: 015 284 4701 Website: www.ral.co.za	E-tender portal and departmental /entity's website	The bid box located in the entrance foyer (ground floor) of RAL Towers, at 26 Rabe Street, Polokwane
116	GAAL	Tel: 015 288 0122 Fax: 015 288 0346 Website: www.gaal.co.za	E-tender portal and departmental /entity's website	The bid box is located in the main entrance, the ground floor of the administration building, Polokwane International Airport, Army Base
117	VIVET	Tel: 015 963 3156 Fax: 015 963 3154 Website: www.vhembecollege.edu.za	E-tender portal and departmental /entity's website	Vhembe TVET College , Central Office, Site No 203 SIBASA 0970
118	WTVET	Tel: 015 491 8581/8602 Fax: 015 491 8579 Website: www.procurement@waterbergcollege.co.za	E-tender portal and departmental /entity's website	Waterberg FET College , Central Office, 36 Hooge Street, Mokopane, Private Bag x 2449, Mokopane 0600
119	GNT	Tel. 015 291 2641 Fax. 015 291 2648	E-tender portal and departmental /entity's website	Great North Transport No. 130 Marshall Street, Polokwane.0700
120	MT	Tel. 015 2907715/7772	E-tender portal and departmental /entity's website	Mvula Trust 25 Rhodesdrift Street, Rhodesdrift Office Park, Bendor Ext 30, Polokwane
121	CCTVET	Tel.015 230 1800 Fax. 015 291 2767	E-tender portal and departmental /entity's website	Private Bag X9674 Polokwane 0700
122	IDT	Tel: 015 295 0000 Fax: 015 295 6559	E-tender portal and departmental /entity's website	Independent Development Trust P.O. Box 55386

				Polokwane 0700
123	DBSA	scmqueries@dbsa.org	E-tender portal and departmental /entity's website	Development Bank of Southern Africa Welcome Centre 1258 Lever Road Midrand
124	MMSEZ	www.mmsez.co.za	E-tender portal and departmental /entity's website	Makhado Musina Special Economic Zone 93 Biccard Street, Polokwane, 0699

ANNEXURE 3: ADDRESS LIST AND CONTACT DETAILS: PROVINCIAL TREASURY SCM CLIENT SUPPORT CENTRES
(CSD registration, and assistance with SBD forms completion):

PROVINCIAL TREASURY SUPPLY CHAIN MANAGEMENT CLIENT SUPPORT CENTRES	
<p>HEAD OFFICE</p> <p>SCM CLIENT SUPPORT 56 – 58 Paul Kruger Street POLOKWANE Private Bag x9494 POLOKWANE, 0700 Tel No. (015) 291 8400</p> <p>Contact: Ms. L. D. Msimeki @ Tel: 015 291 8755</p>	<p>Capricorn SCM Client Support Centre</p> <p>Limpopo Provincial Treasury 56-58 Paul Kruger Street Private Bag x9494 POLOKWANE, 0700 Tel No. (015) 291 8400</p> <p>Contact Person : Ms. Rasilingwani M</p>
<p>Vhembe SCM Client Support Centre</p> <p>Limpopo Provincial Treasury Government Building Complex BLOCK E GROUND FLOOR THOHOYANDOU, VENDA Tel: (015) 962 1752 Fax : (015) 962 1282</p> <p>Contact Person : Ms. A Manena</p>	<p>Mopani SCM Client Support Centre</p> <p>Limpopo Provincial Treasury Private Bag X 1973 GIYANI, 0826 Tel : (015) 812 0149 Fax : 086 219 7905</p> <p>Contact Person : Mr. M.N. Molele</p>
<p>Waterberg SCM Client Support Centre</p> <p>Limpopo Provincial Treasury 84 Limpopo Street NTK Building MODIMOLLE. 0510 Mobile: 060 992 6210 (Temporarily) Contact Person : Ms. R Moloi</p>	<p>Sekhukhune SCM Client Support Centre</p> <p>Limpopo Provincial Treasury Lefa Centre, Schoonoord Road JANE FURSE Tel: (013) 265 1344 Fax: (013) 265 1354</p> <p>Contact Person: Mr. M. S. Sehale</p>

Supplier Self-Registration Process



(a) Auto verification of supplier information with SARS, CIPC etc.